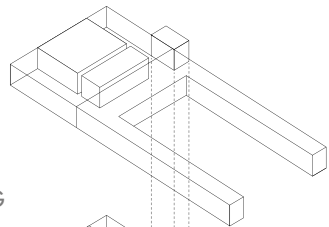


Hans Bader Saal 210m² Nutzfläche

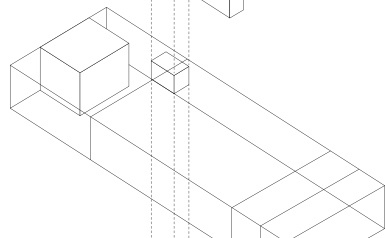
Cocktail

MOBILIAR	MENGE
Stehische Ø 0.6m	48
Barhocker	144

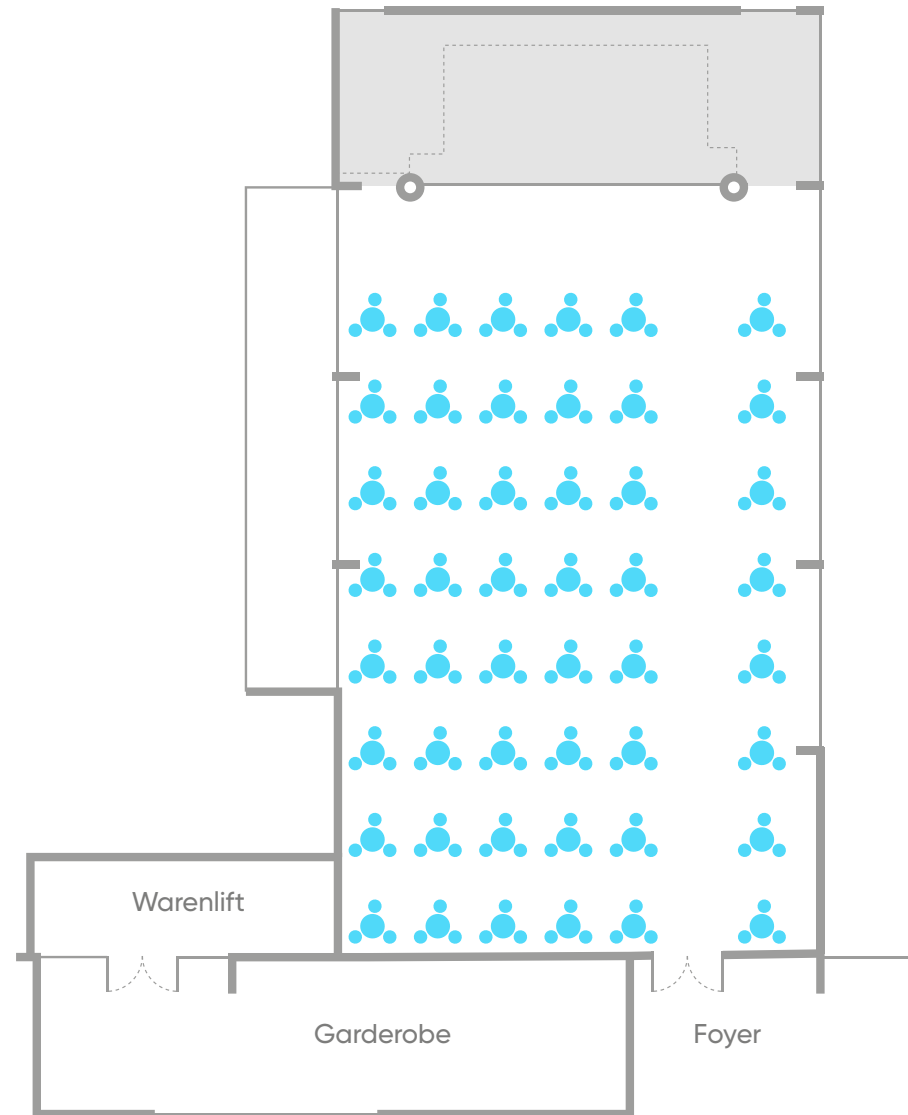
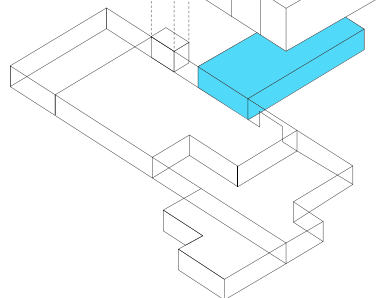
2. OG



1. OG



EG



X-TRA PRODUCTION AG

Limmatstrasse 118

Postfach

8031 Zürich

+41 44 448 15 00

+41 44 448 15 01

events@X-TRA.ch

www.X-TRA.ch



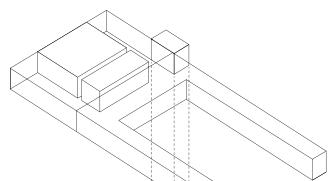
X-TRA

Hans Bader Saal 210m² Nutzfläche

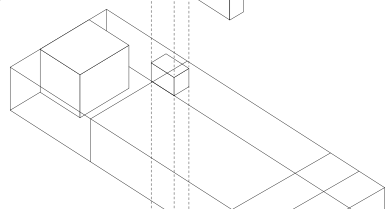
Bankett

MOBILIAR	MENGE
Tische	28
Stühle	168

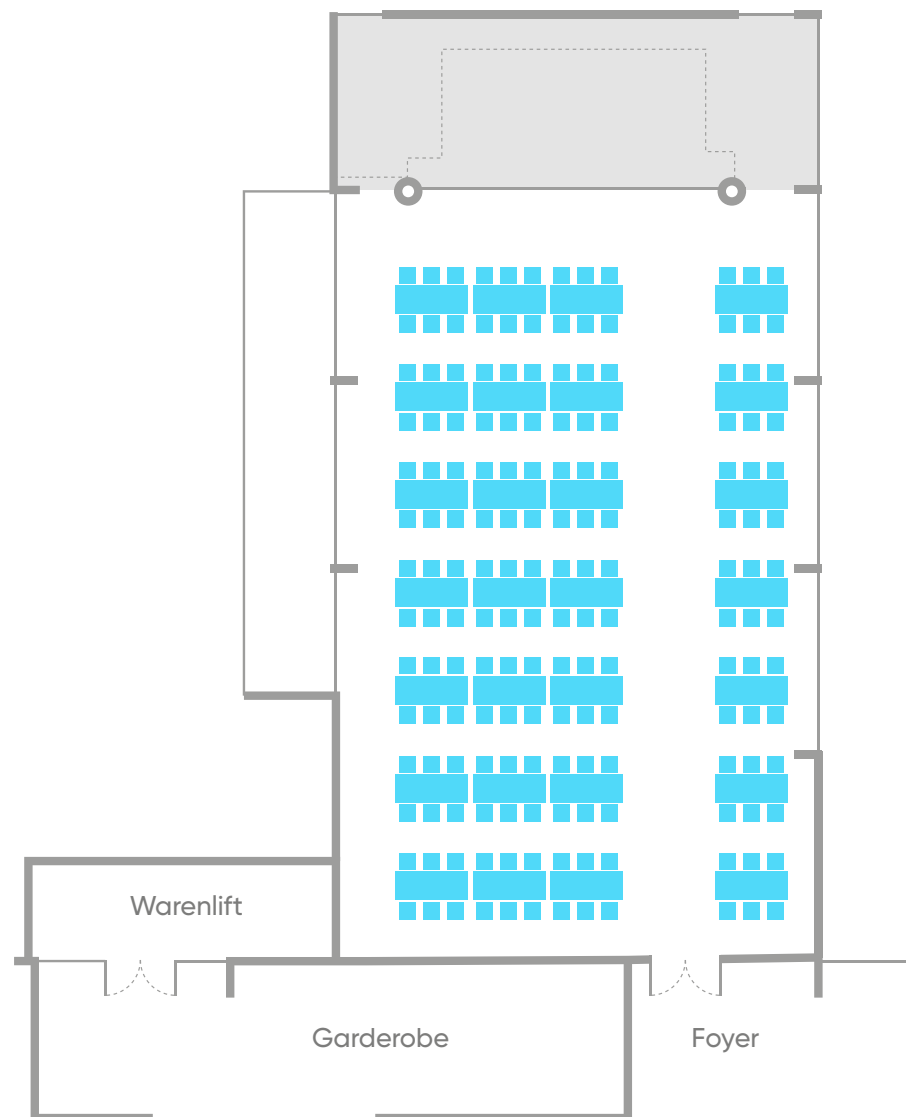
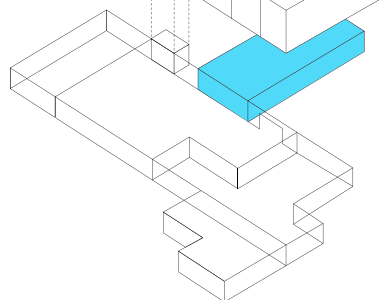
2. OG



1. OG



EG



X-TRA PRODUCTION AG

Limmatstrasse 118

Postfach

8031 Zürich

+41 44 448 15 00

+41 44 448 15 01

events@X-TRA.ch

www.X-TRA.ch



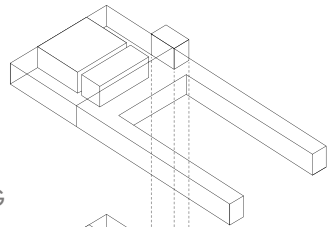
X-TRA

Hans Bader Saal 210m² Nutzfläche

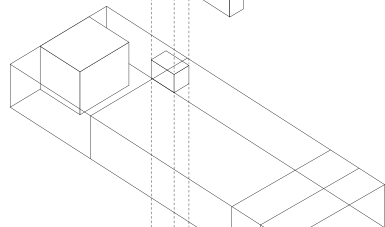
Gala Dinner

MOBILIAR	MENGE
Tische Ø 1.8m	6
Tische Ø 2.0m	9
Stühle	138

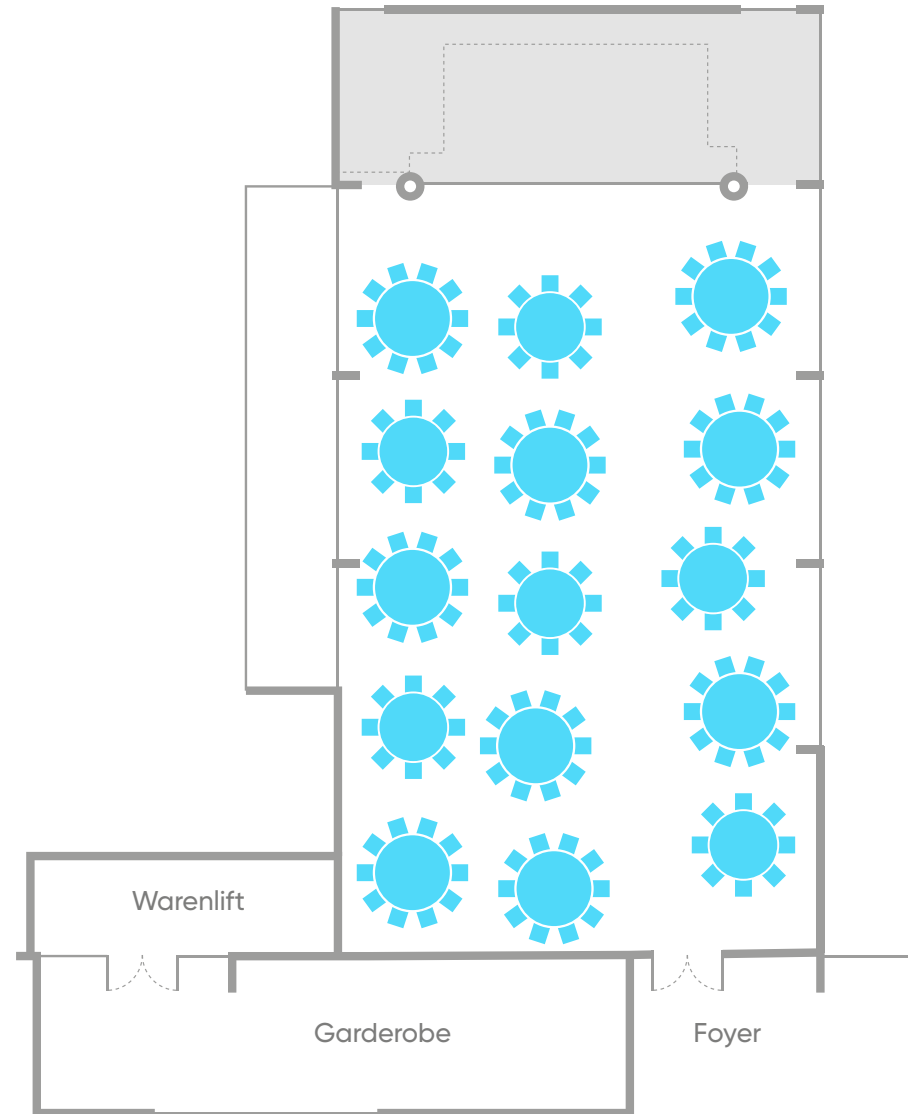
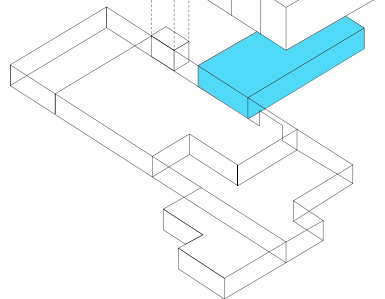
2. OG



1. OG



EG



X-TRA PRODUCTION AG

Limmatstrasse 118

Postfach

8031 Zürich

+41 44 448 15 00

+41 44 448 15 01

events@X-TRA.ch

www.X-TRA.ch



X-TRA

Hans Bader Saal 210m² Nutzfläche Theater

X-TRA PRODUCTION AG

Limmatstrasse 118

Postfach

8031 Zürich

+41 44 448 15 00

+41 44 448 15 01

events@X-TRA.ch

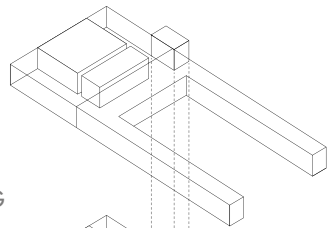
www.X-TRA.ch



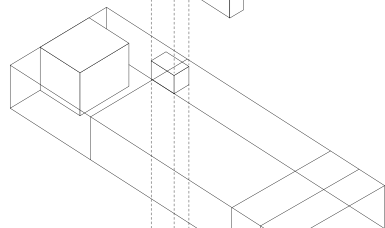
X-TRA

MOBILIAR	MENGE
Stühle	270

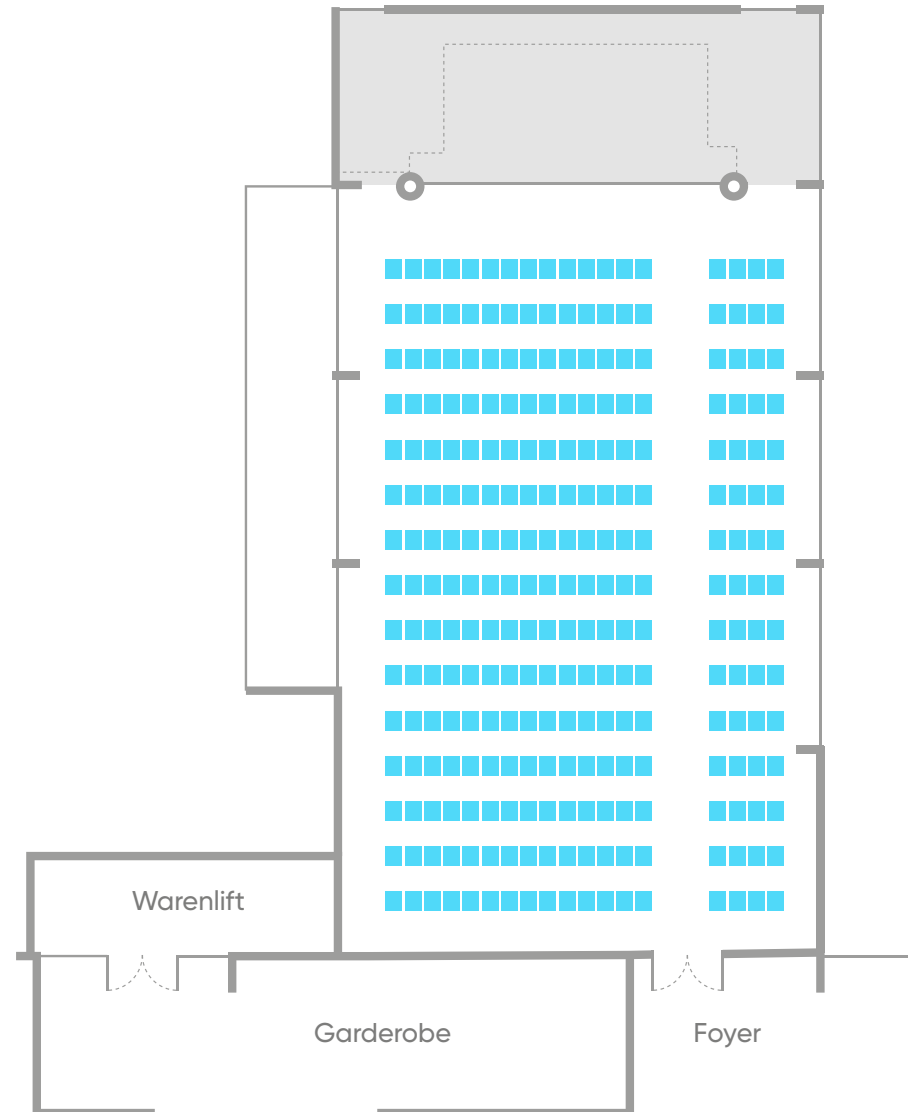
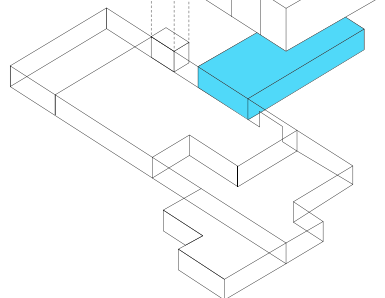
2. OG



1. OG



EG

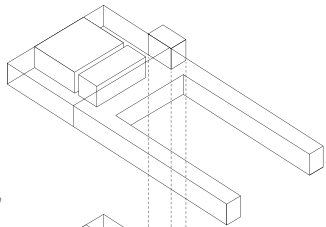


Hans Bader Saal 210m² Nutzfläche

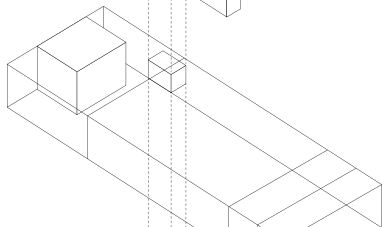
Seminar

MOBILIAR	MENGE
Tische	50
Stühle	100

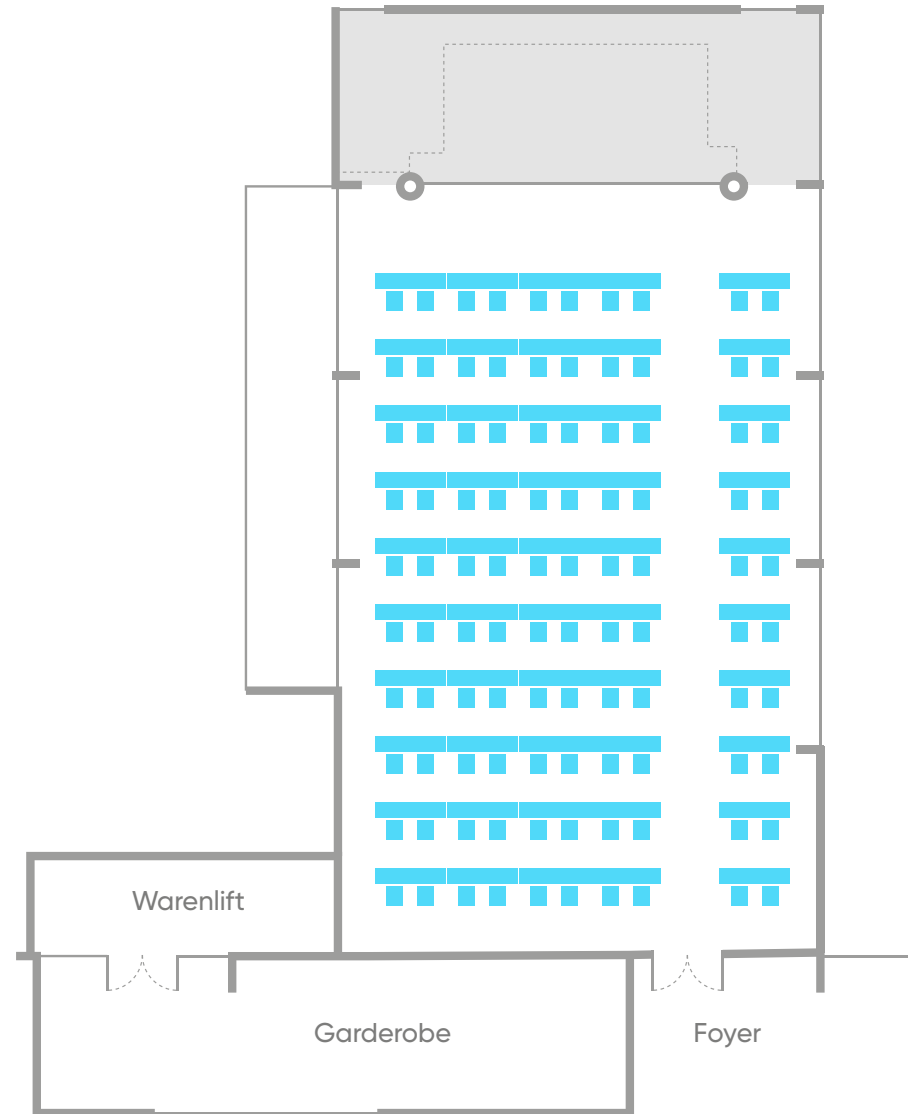
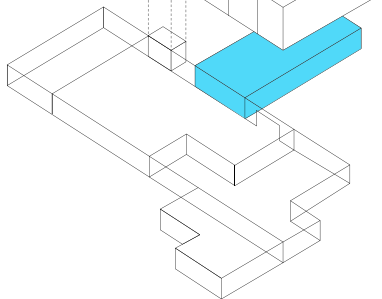
2. OG



1. OG



EG



X-TRA PRODUCTION AG

Limmatstrasse 118

Postfach

8031 Zürich

+41 44 448 15 00

+41 44 448 15 01

events@X-TRA.ch

www.X-TRA.ch



X-TRA