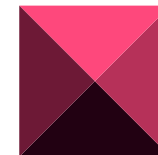


X-TRA Lighting

X-TRA PRODUCTION AG

Limmatstrasse 118
Postfach
8031 Zürich

+41 44 448 15 00
+41 44 448 15 01
events@X-TRA.ch
www.X-TRA.ch



X-TRA

FIXTURES ON STAGE

12* CLAY PAKY Alpha Spot HPE 700
8* MARTIN MAC Aura
2* MARTIN Atomic Strobe
2* 8 ACL PAR64
2* 4-Lite

FLOATING STAGE FIXTURES

8* PAR64 Floor
1* Smoke machine
1*DF50 Oil Cracker (Haze)

FRONT LIGHTING

7* ETC Source 4 Zoom Profile
2* Fresnel 2kW

HOUSE LIGHTING

18* HIGH END Sola Wash 1000 FX

ADDITIONAL HIRE EQUIPMENT

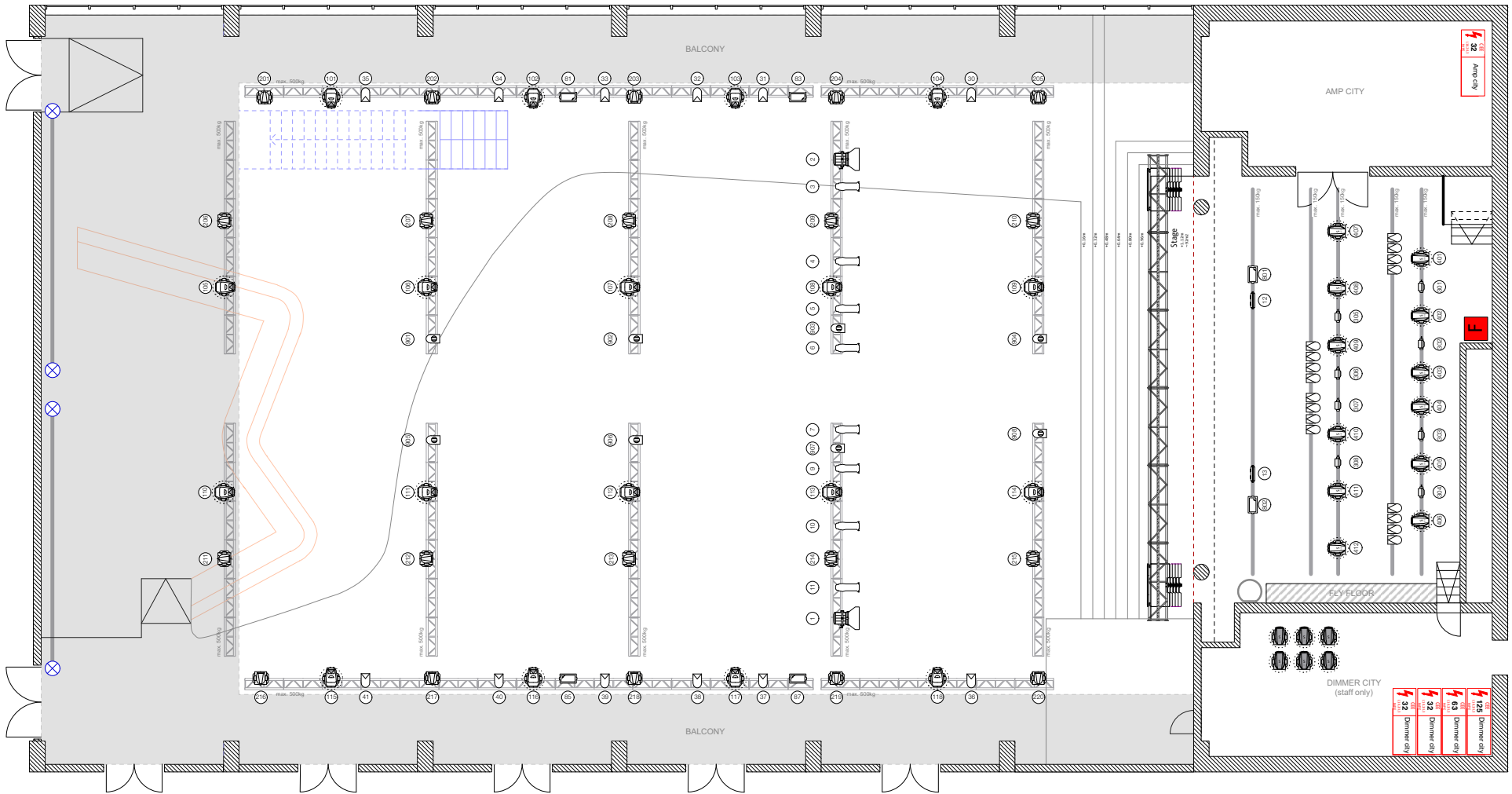
6 x CLAY PAKY Alpha Spot 700 HPE (floating) @ 600 CHF/day
20 x CLAY PAKY Sharpy (fixed installation) @ 600 CHF/day

DESK

1* HIGH END RoadHog FullBoar 3
2* HIGH END Hog Extension Wing

POWER

1x CEE125A 3-Phase (Stage Left)
1x CEE63A 3-Phase (Stage Left)
2 x CEE32A 3-Phase (Stage Left)



MAXIMUM WEIGHT LOADS
 On-stage flybars: 150 kg
 Individual truss beams: 500 kg

	CLAY PAKY Alpha Spot HPE 700	12
	HES SolaWash FX 1000	18
	MARTIN MAC Aura	8
	MARTIN Atomic 3000	6
	4-Lite Blinder	2

	ETC Source 4 Zoom 15-30 short	8
	ARRI True Blue ST2/3	2
	PAR 64 LED Full Colour	8
	PAR 64 ACL	16

PAR 64 WFL 12

Additional hire equipment

	CLAY PAKY Sharpy	20
	CLAY PAKY Alpha Spot HPE 700 (spare)	6

additional hire equipment will be charged separately

Project: X-TRA	Drawing title: Stage Plan Top View / Side View	Date event: 2017	Plan N°: 1	Scale: 1:100	Plan format: A4
Customer: X-TRA Events	Drawing Date: 13.01.2017	Revision:	Sign:	Changes:	Date:
Drawn by: GS	Project manager:	Del:	Mobile:	Email:	



DESIGNLIGHT