

# X-TRA Lighting

## X-TRA PRODUCTION AG

Limmatstrasse 118  
Postfach  
8031 Zürich

+41 44 448 15 00  
+41 44 448 15 01  
events@X-TRA.ch  
www.X-TRA.ch



# X-TRA

## FIXTURES ON STAGE

12\* CLAY PAKY Alpha Spot HPE 700  
8\* MARTIN MAC Aura  
2\* MARTIN Atomic Strobe  
2\* 8 ACL PAR64  
2\* 4-Lite

## FLOATING STAGE FIXTURES

8\* PAR64 Floor  
1\* Smoke machine  
1\*DF50 Oil Cracker (Haze)

## FRONT LIGHTING

7\* ETC Source 4 Zoom Profile  
2\* Fresnel 2kW

## HOUSE LIGHTING

18\* HIGH END Sola Wash 1000 FX

## ADDITIONAL HIRE EQUIPMENT

6 x CLAY PAKY Alpha Spot 700 HPE (floating) @ 600 CHF/day  
20 x CLAY PAKY Sharpy (fixed installation) @ 600 CHF/day

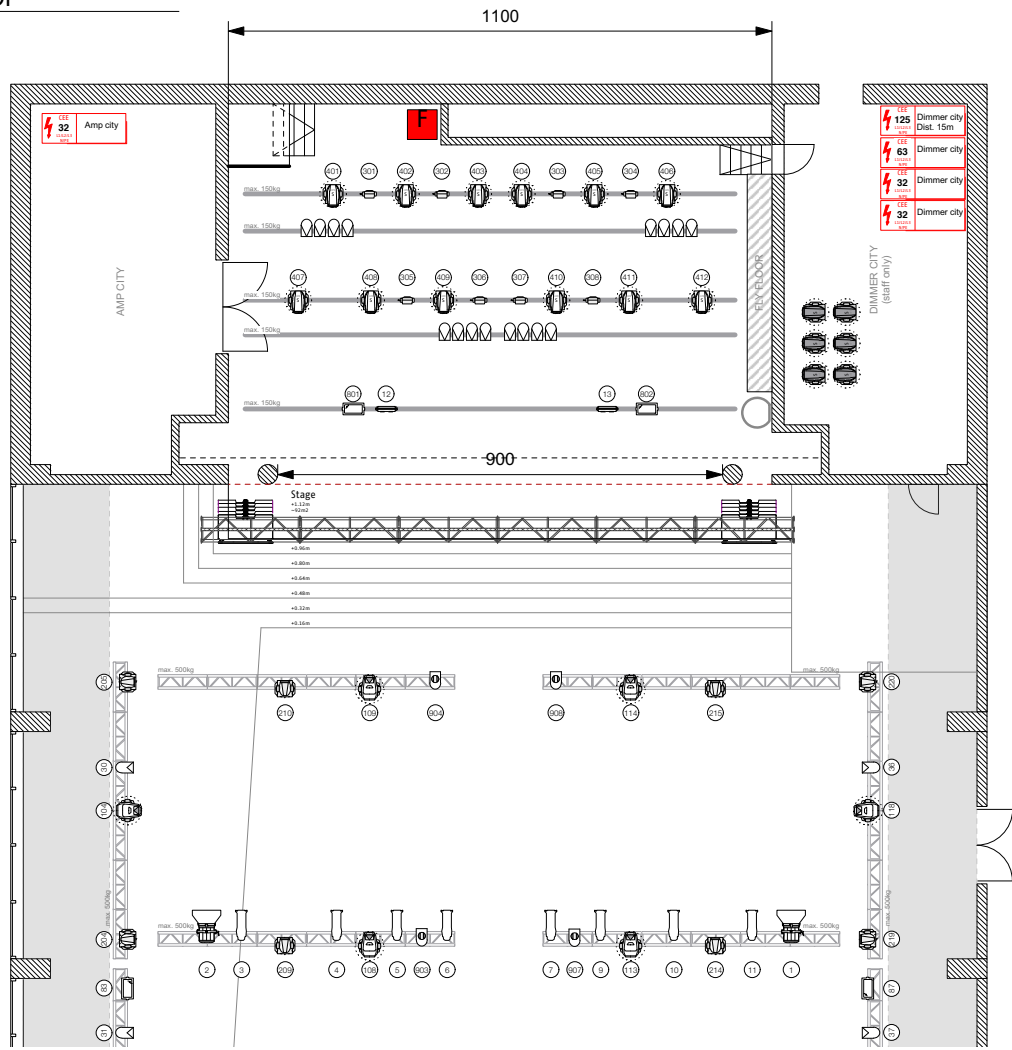
## DESK

1\* HIGH END RoadHog FullBoar 3  
2\* HIGH END Hog Extension Wing

## POWER

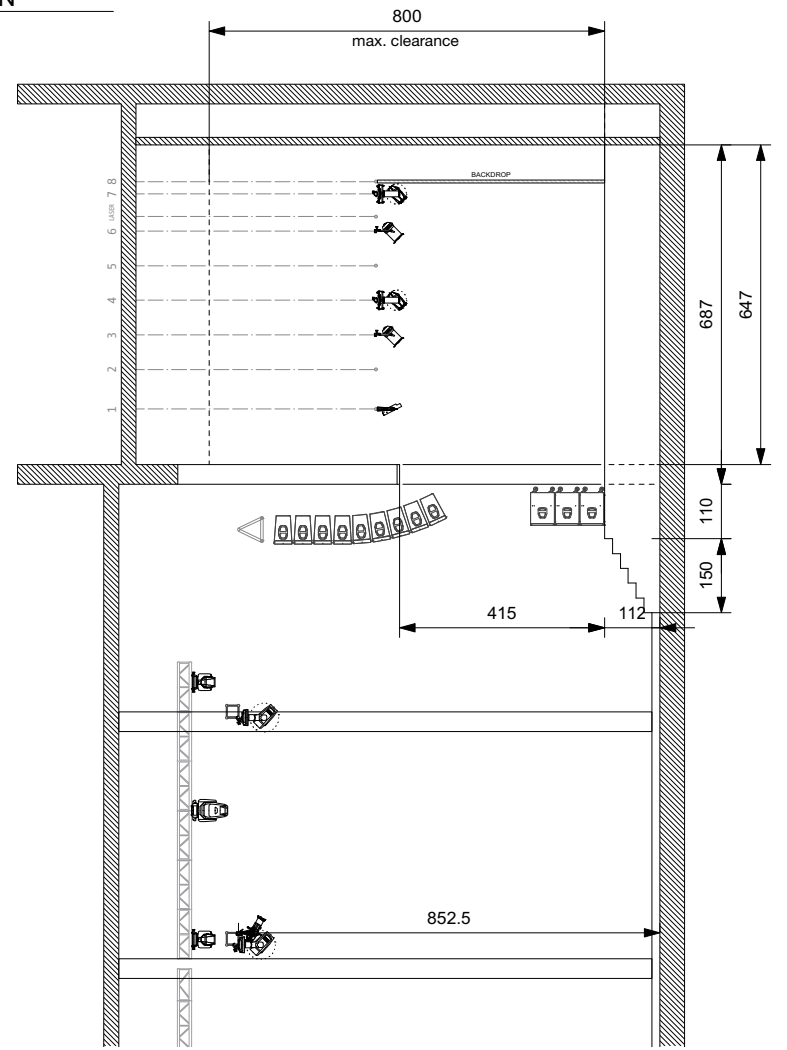
1x CEE125A 3-Phase (Stage Left)  
1x CEE63A 3-Phase (Stage Left)  
2 x CEE32A 3-Phase (Stage Left)

TOP



**MAXIMUM WEIGHT LOADS**  
 On-stage flybars: 150 kg  
 Individual truss beams: 500 kg

SECTION



	CLAY PAKY Alpha Spot HPE 700	12		ETC Source 4 Zoom 15-30 short	8		PAR 64 WFL	12
	HES SolaWash FX 1000	18		ARRI True Blue ST2/3	2	<b>Additional hire equipment</b>		
	MARTIN MAC Aura	8		PAR 64 LED Full Colour	8		CLAY PAKY Sharpy	20
	MARTIN Atomic 3000	6		PAR 64 ACL	16		CLAY PAKY Alpha Spot HPE 700 (spare)	6
	4-Lite Blinder	2	additional hire equipment will be charged separately					

Project: X-TRA		Drawing title: Stage Plan		Date: 2017	Plan #: 1	Scale: 1:100	Plan format: A4
Customer: X-TRA Events		Drawing Date: 13.01.2017		Revisions:	Sign:	Changes:	Date:
Drawn by: GS		Project manager:					
Title:		Author:					
Email:							

**DESIGNLIGHT**

